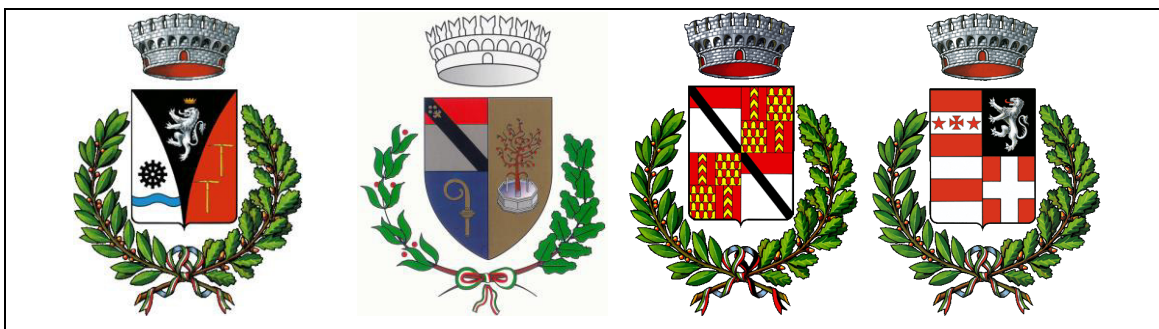


REGIONE AUTONOMA VALLE D'AOSTA
REGION AUTONOME VALLEE D'AOSTE



COMUNI DI
CHAMPDEPRAZ – ISSOGNE – VERRRES – ARNAD

Committente: Amministrazione comunale di CHAMPDEPRAZ

**POTENZIAMENTO DELLA RETE IDRICA DI CHAMPDEPRAZ AI
FINI DEL COLLEGAMENTO CON L'ACQUEDOTTO COMUNALE
DI ARNAD ED ISSOGNE**

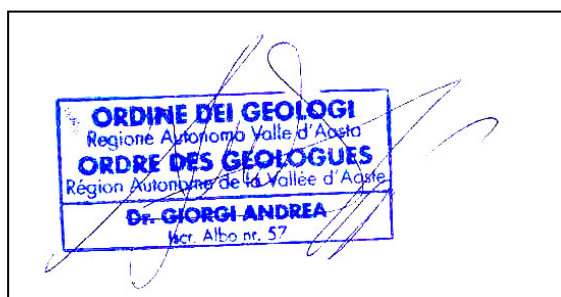
STUDIO DI IMPATTO AMBIENTALE

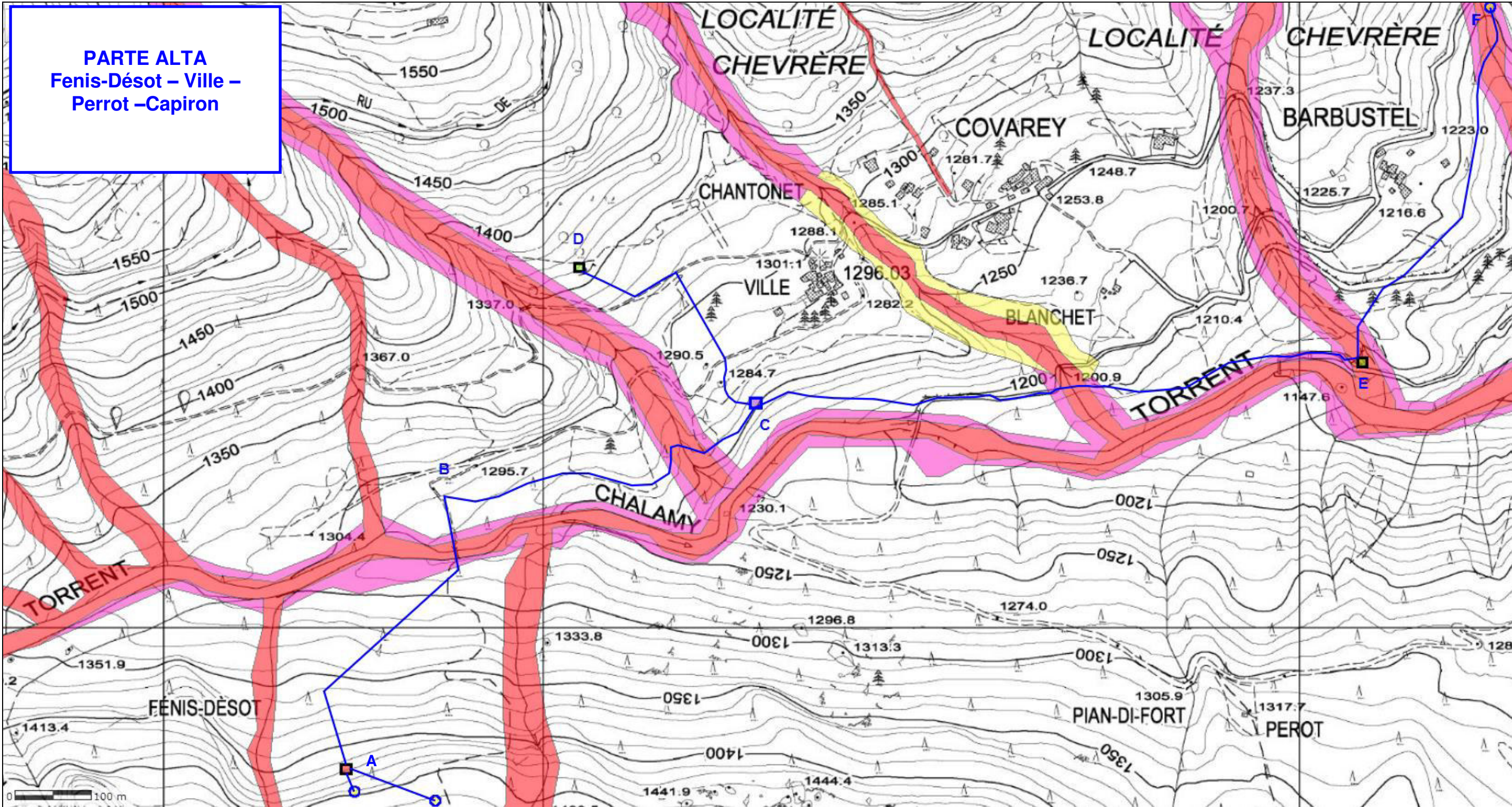
TAV. 8.5 - CARTA DEI VINCOLI ART. 36 LR 11/1998

TECNICI INCARICATI:

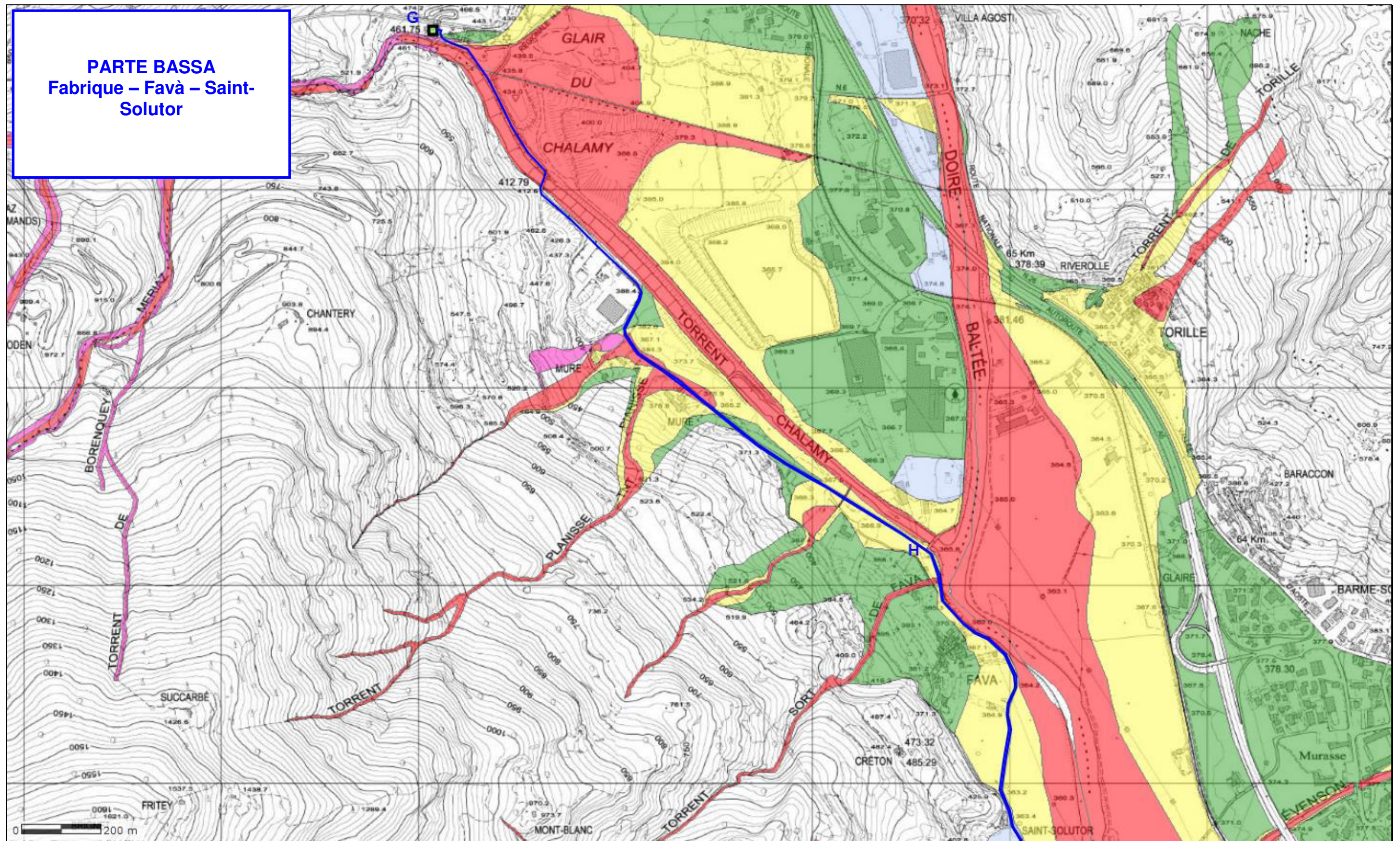
GEOL. ANDREA GIORGI

FOR. LUCA PEZZUOLO








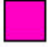



PARTE BASSA
Fabrique – Favà – Saint-
Solutor









LEGENDA

Ambiti

Art.36 - Inondazioni

-  FA - Area di deflusso della piena
-  FB - Area di esondazione
-  FC - Area di inondazione per piena catastrofica
-  IC-A - Fascia di cautela con disciplina d'uso FA
-  IC-B - Fascia di cautela con disciplina d'uso FB
-  IC-C - Fascia di cautela con disciplina d'uso FC
-  NA - Cartografia non approvata

-  Tubazioni in progetto
-  Opera di presa sorgenti
-  Vasca di carico
-  Vasca di accumulo di testata
-  Vasca di accumulo esistente
-  Camera di manovra